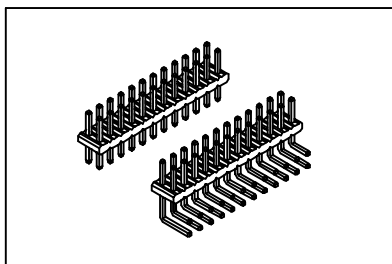


Pin Header 2.0mmX2.0mm(0.079”X0.079”)

GXCON



Material:

Housing: High temperature housing withstands IR and VPR soldering methods.

Contacts: Brass.

Plating: Gold plated over nickel.

Tin plated over nickel.

Electrical Characteristics:

Current Rating: 1 AMP.

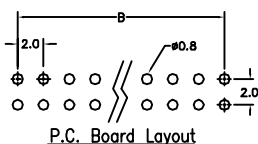
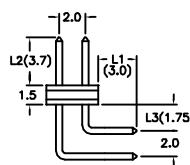
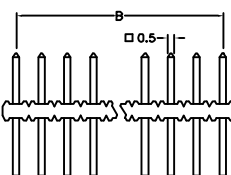
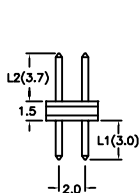
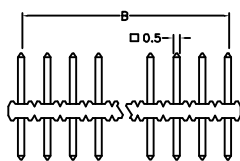
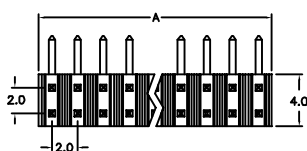
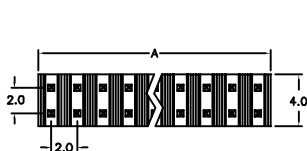
Insulator Resistance: 5000MΩmin. at DC 500V.

Contact Resistance: 20mΩmax. at DC 100mA.

Operating Temperature: -65 °C ~ +125 °C .

Features:

- * Low profile 1.50mm (0.059”)
- * Available in Straight and Right angle.
- * Side-to-side and end-to-end stackable.
- * Custom design provides wide product flexibility.



P.C. Board Layout

Position	4 Thru 80
Dimension	
A	2.0 X No. of Positions /2
B	2.0 X No. of Positions /2-2.0

Ordering information

PH11- 2	40	1	1
Series	Double Row	No. of Pin Per Row	1: Gold Plated 2: Tin Plated
			1: Straight 2: Right Angle

Custom Design: Straight (i.e. PH11-24011/L1 /L2)
Right Angle (i.e. PH11-24012/L1 /L2 /L3)